

NeuroMat Parkinson Network (AMPARO)

André Frazão Helene

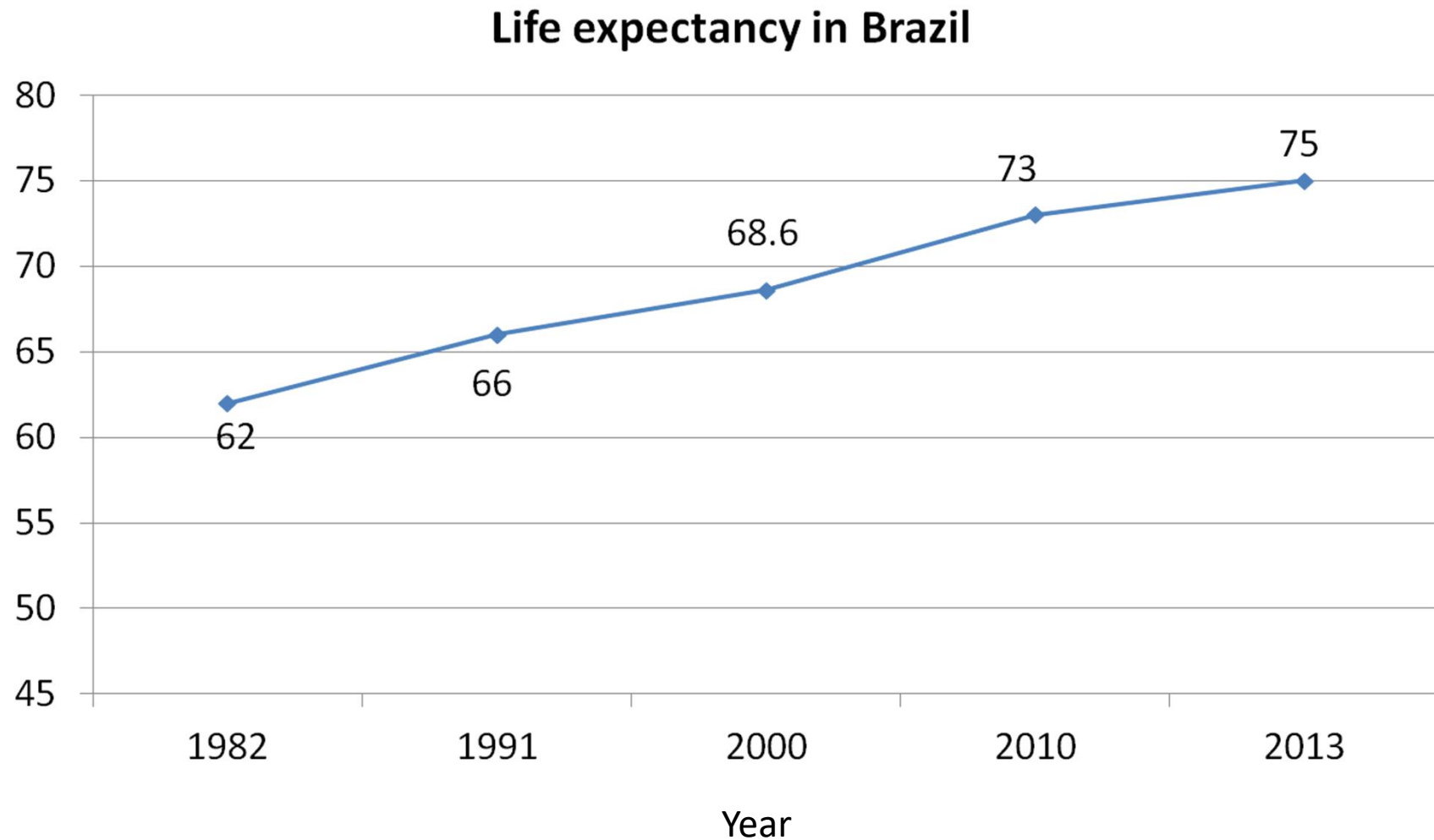
Parkinson

- Parkinson's disease (PD) is a progressive neurodegenerative disorder with degeneration of nigrostriatal dopaminergic neurons in basal ganglia (BG) resulting movement disorder characterized by
 - tremor
 - rigidity
 - Bradykinesia
 - postural instability

Parkinson

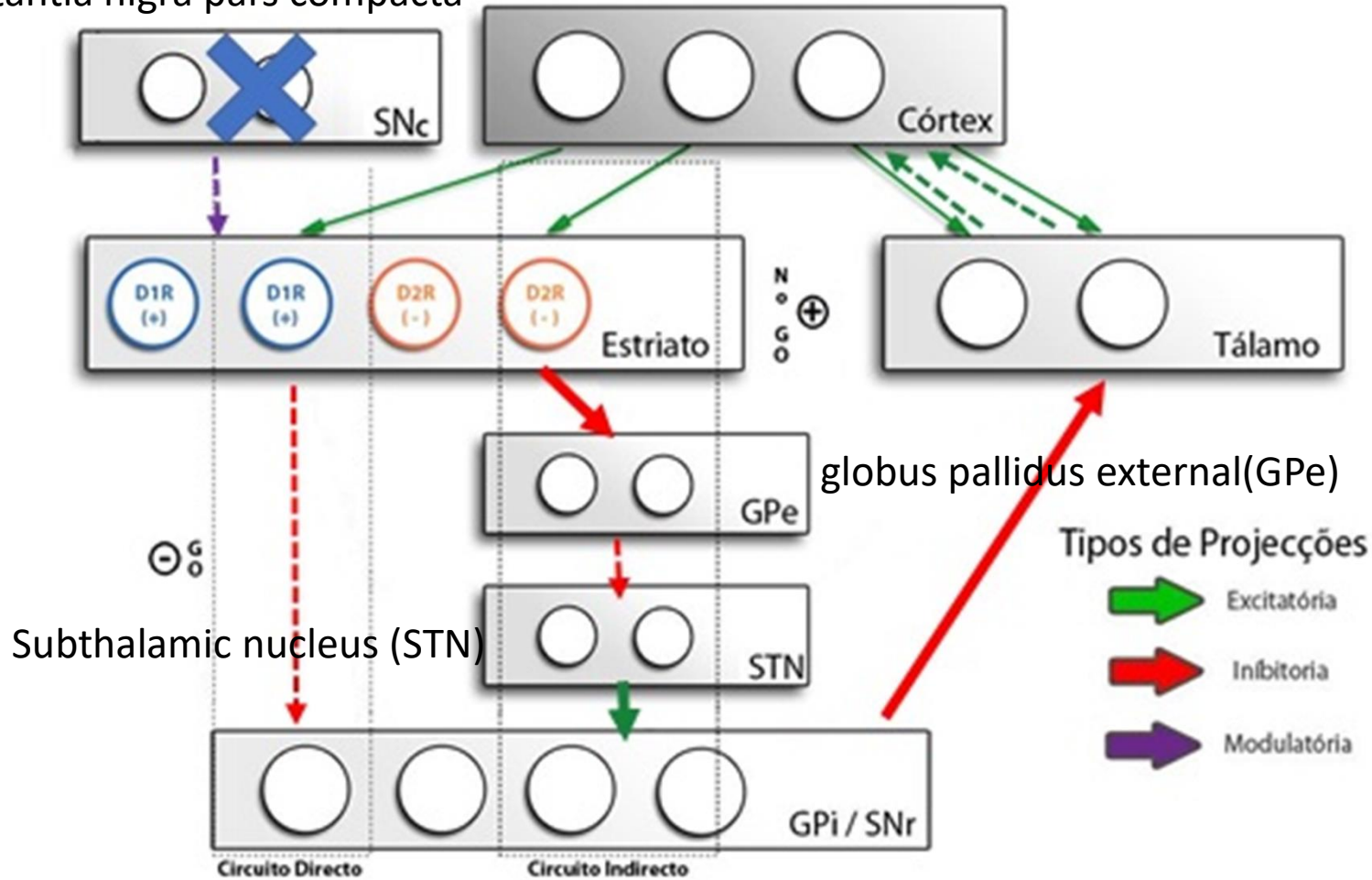
- Second most prevalent neurodegenerative disease - between 80 and 160 cases per 100.000 inhabitants
- In Brazil the burden of Parkinson disease is expected to double over the next generation as the result of increasing life expectancy.

Life expectancy – last 30 years



Dopaminergic cell loss

Substantia nigra pars compacta (SNc)

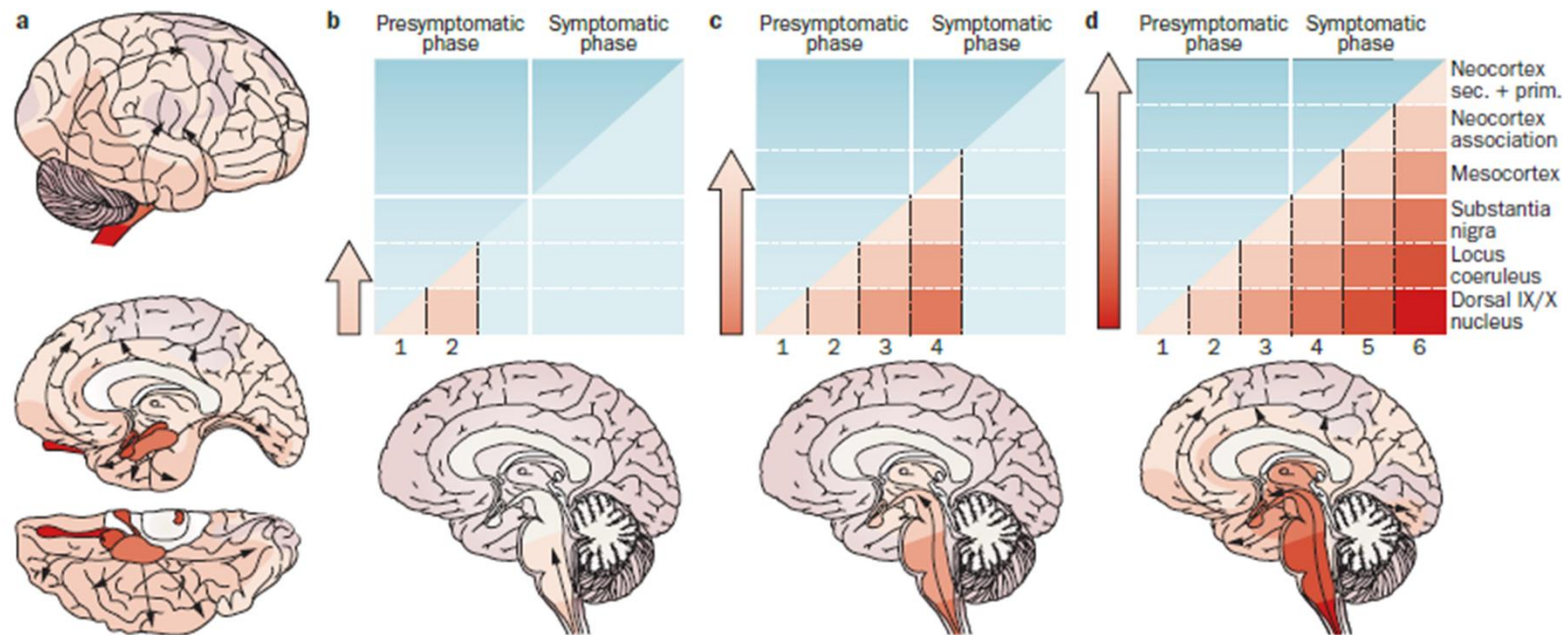


GPe/SNr (globo pallidus internal e substantia nigra pars reticulata)

Non motor symptoms

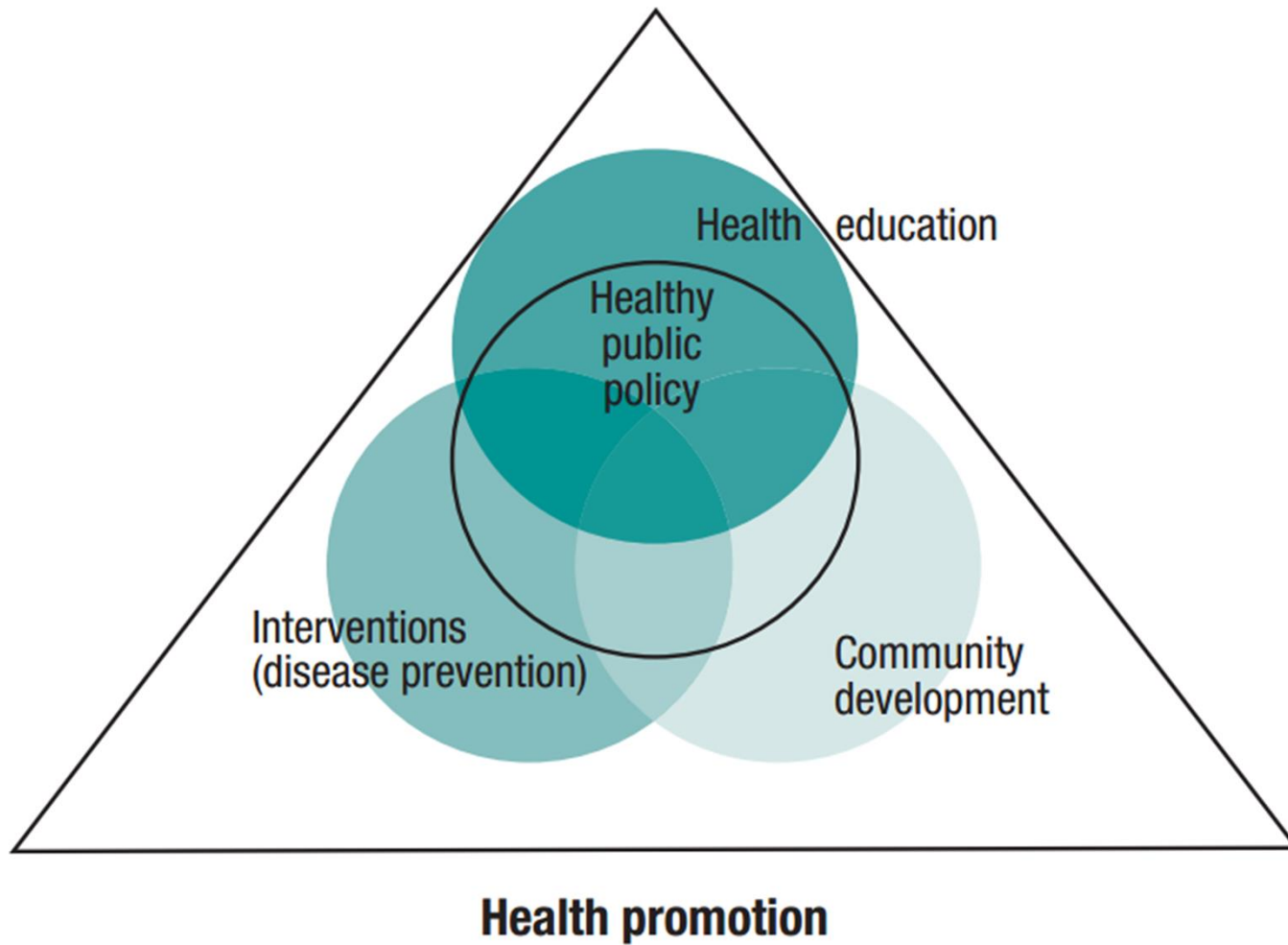
- In addition to the motor symptomatology some non-motor symptoms involves:
 - Hyposmia, rapid eye movements, sleep behaviour disorder, personality changes, pain, paresthesias and depression may be present and may even manifest before the motor symptoms
 - Urinary disturbances, orthostatic hypotension and neuropsychiatric disturbances (dementia, hallucinations and delirium) usually become evident and troublesome after several years in the course of the disease
 - Overt dementia is a late complication that most frequently patients with prolonged disease duration

Progression



Health promotion

World Health organization



Comunity development

- Successful health promotion demands a coordinated action by governments, the health sector and other social and economic sectors, nongovernmental and voluntary organizations, local authorities, industry and the media.

NeuroMat Parkinson Network – AMPARO

Partnership

- Associação Brasil Parkinson
 - The biggest association for PD in Brazil
 - ABP has more than 6.000 members living with PD
 - At least 10% of them have weekly activities in ABP
 - ABP offers structure for the evaluations involved in the project

Comunity development

- Meetings about parkinson desase – aiming organize people with parkinson desease on a coordinated action that involves patients and community

NeuroMat action on Parkinson - Amparo

- Three main goals on
 1. Identify how people with Parkinson's disease live
 2. What obstacles professionals find
 3. Contribute to change positively this reality

Meetings



★ O PROJETO - ■ PROGRAMAÇÃO □ CONTATO ⓘ LOGIN

PROGRAMAÇÃO



ALTERAÇÕES DE FALA EM UMA PESSOA JOVEM COM DOENÇA DE PARKINSON, TRATADA COM DEEP BRAIN STIMULATION

Público-alvo: Profissionais e estudantes

Data / Hora: 28 de Novembro de 2016 às 17:00 (horário de Brasília)

Convidado(a): Giovana Diaferia

Vínculo institucional do(a) convidado(a): Associação Brasil Parkinson e Universidade Federal de São Paulo

🔗 [Leia mais](#)

COMO FALAR AO TELEFONE E SER COMPREENDIDO?

Público-alvo: Pessoas com doença de Parkinson, familiares, cuidadores, estudantes e profissionais

Data / Hora: 28 de Novembro de 2016 às 15:30 (horário de Brasília)

Convidado(a): Giovana Diaferia

Vínculo institucional do(a) convidado(a): Associação Brasil Parkinson e Universidade Federal de São Paulo

🔗 [Leia mais](#)

DISCUSSÃO CLÍNICA INTERPROFISSIONAL: RELATO DE CASO - QUANDO O MAU GERENCIAMENTO DA MEDICAÇÃO É O PIVÔ DAS LIMITAÇÕES FUNCIONAIS

Público-alvo: Profissionais e estudantes

Data / Hora: 24 de Outubro de 2016 às 17:00 (horário de Brasília)

Convidado(a): Michelle Hyczy de Siqueira Tosin

Vínculo institucional do(a) convidado(a): Centro Internacional SARAH de Neuroreabilitação e Neurociências

🔗 [Leia mais](#)

COMO MELHORAR A EFICIÊNCIA DAS MEDICAÇÕES PARA A DOENÇA DE PARKINSON POR MEIO DO SEU MELHOR GERENCIAMENTO

Público-alvo: Pessoas com doença de Parkinson, familiares, cuidadores, estudantes e profissionais

Data / Hora: 24 de Outubro de 2016 às 16:00 (horário de Brasília)

Convidado(a): Michelle Hyczy de Siqueira Tosin

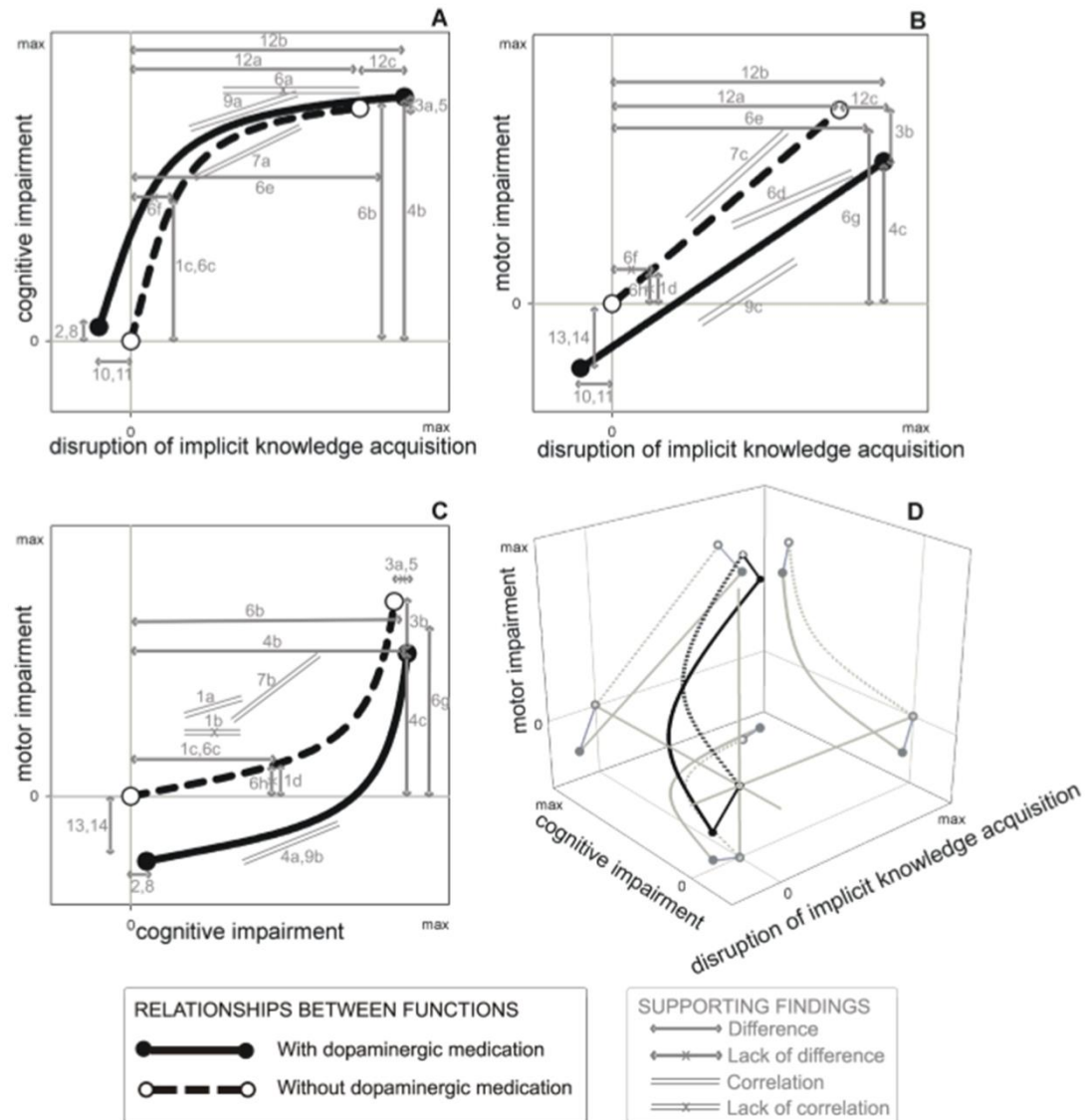
Vínculo institucional do(a) convidado(a): Centro Internacional SARAH de Neuroreabilitação e Neurociências

<https://amparo.numec.prp.usp.br/>

Interventions an health education

1 Parkinson's Disease Progression Effects

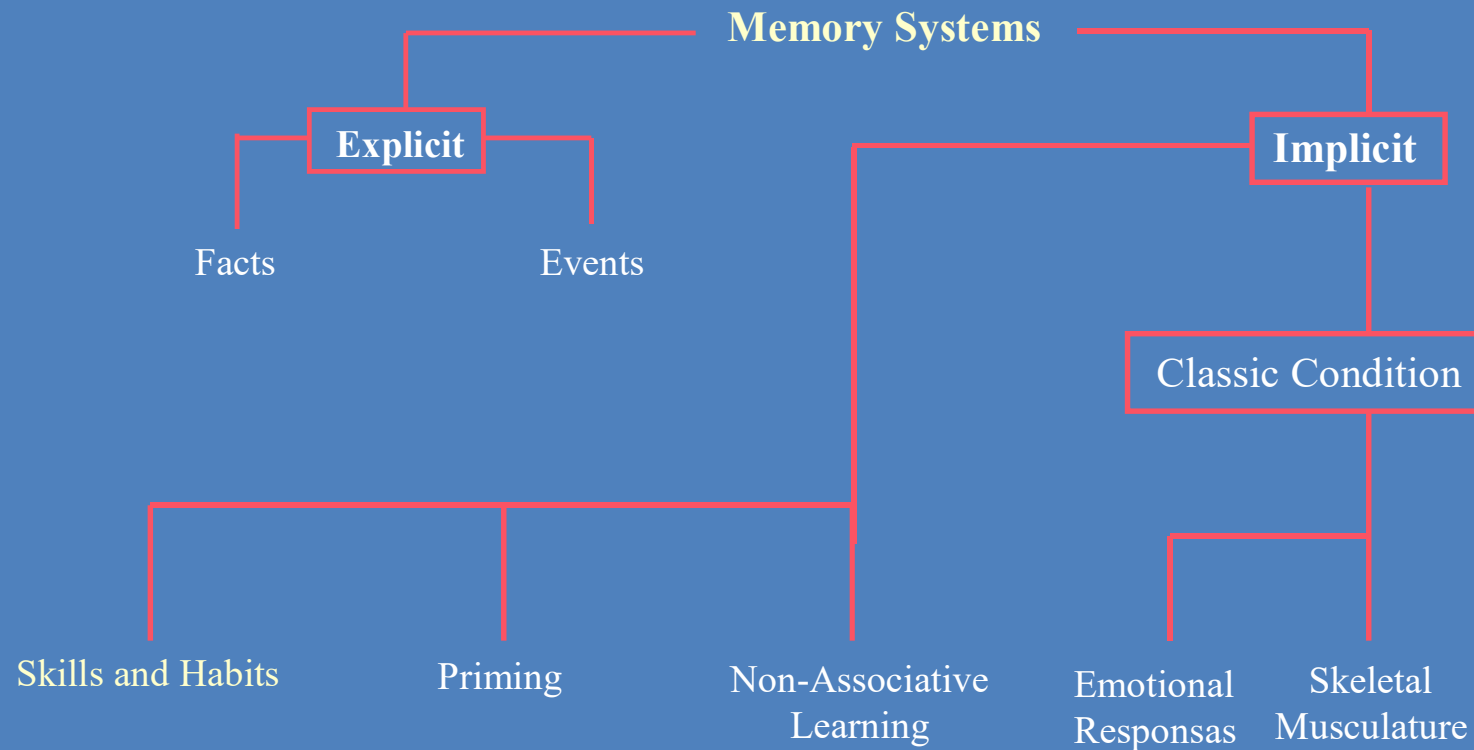
1 Parkinson's Disease Progression Effects



2 Strategies on explicit guided actions

Memory systems

Long Term Memory

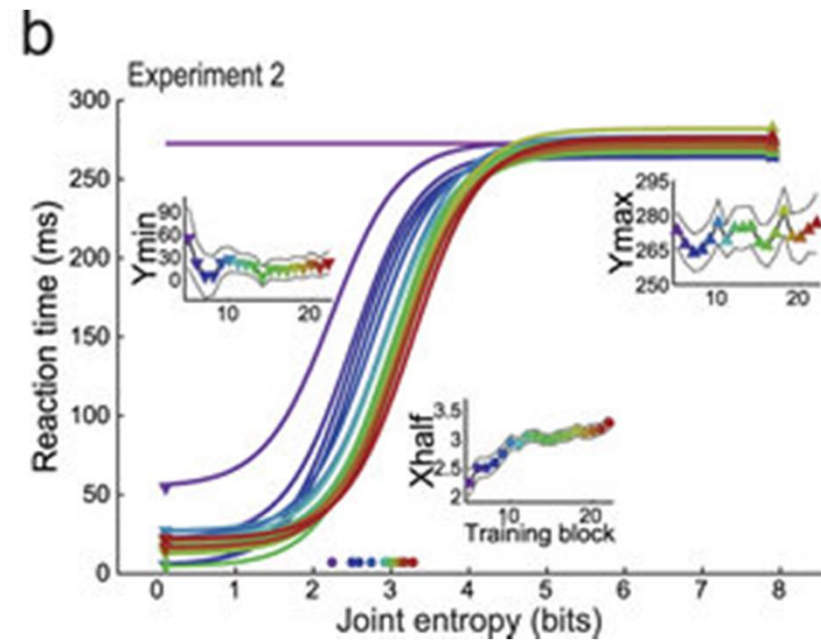
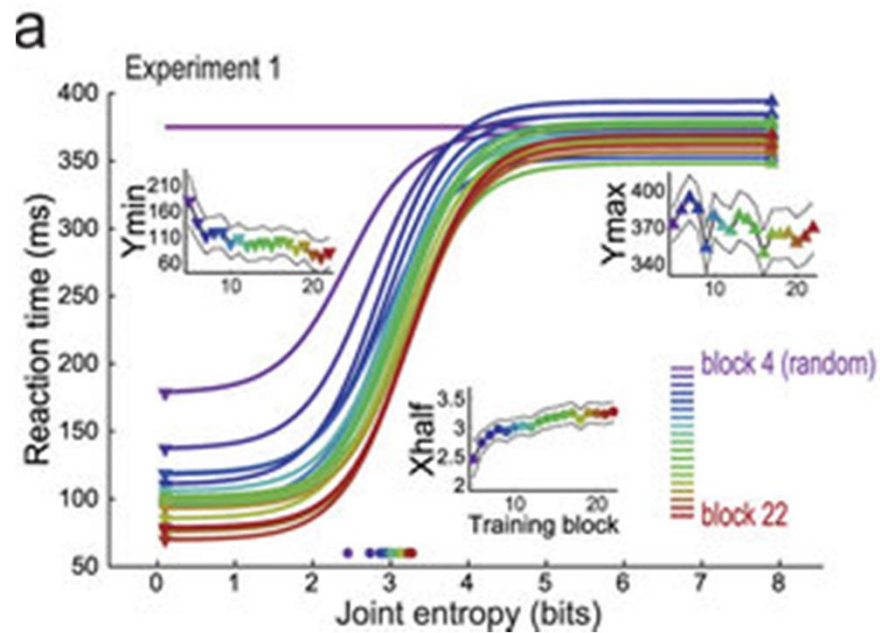


Long-term memory taxonomy, according to Squire and Zola-Morgan (1991).

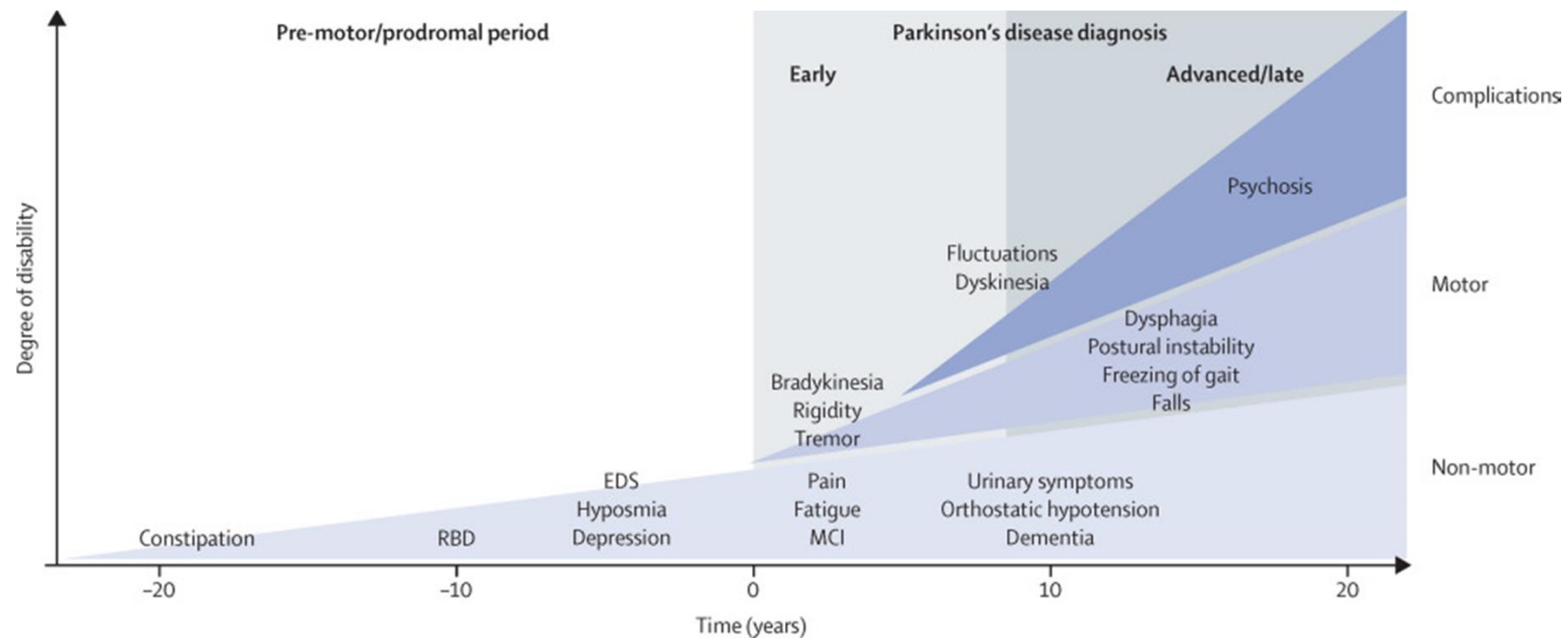




3 EVALUATION OF IMPLICIT LEARNING

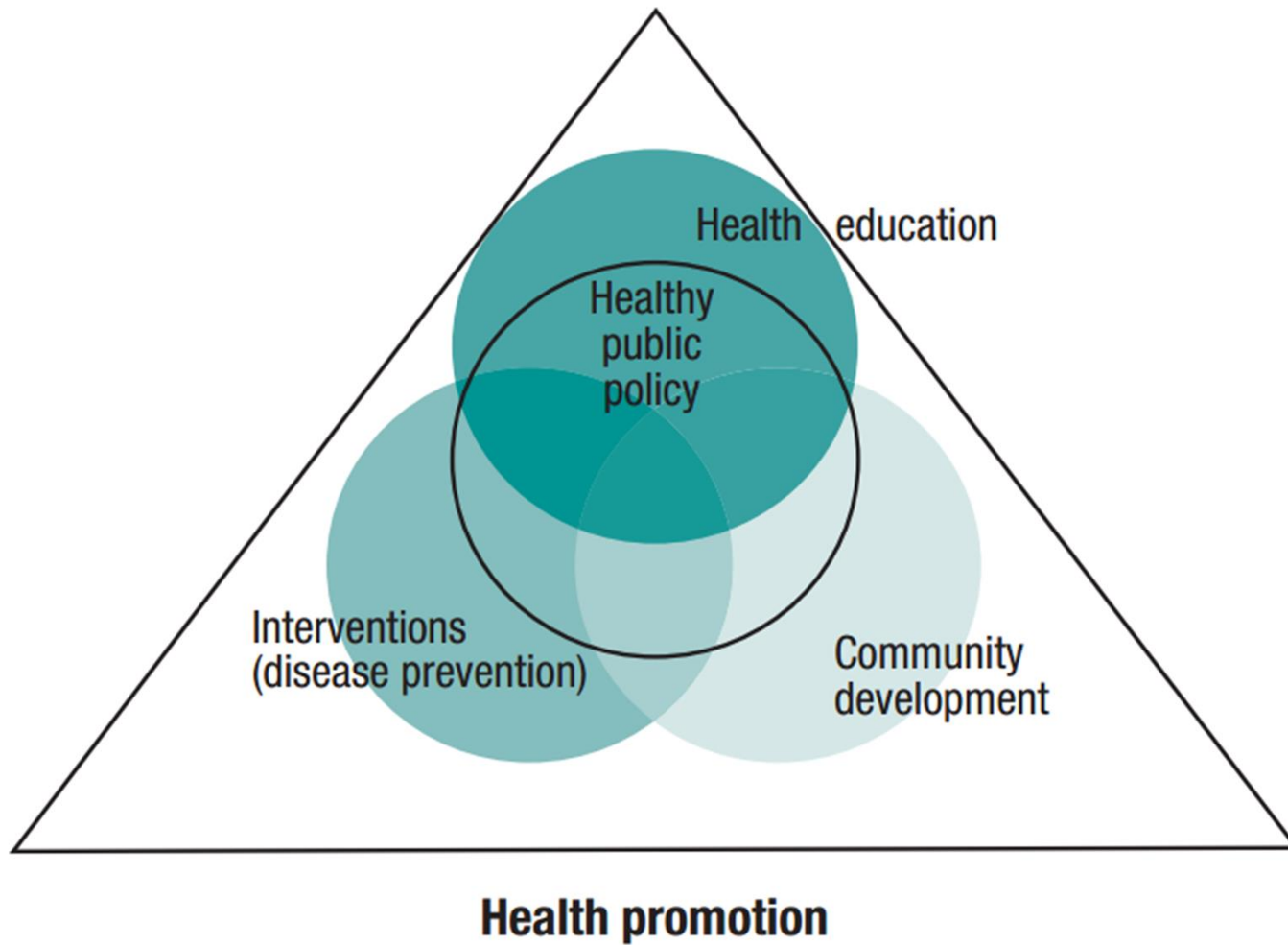


EVALUATION OF IMPLICIT LEARNING on pre-motor period



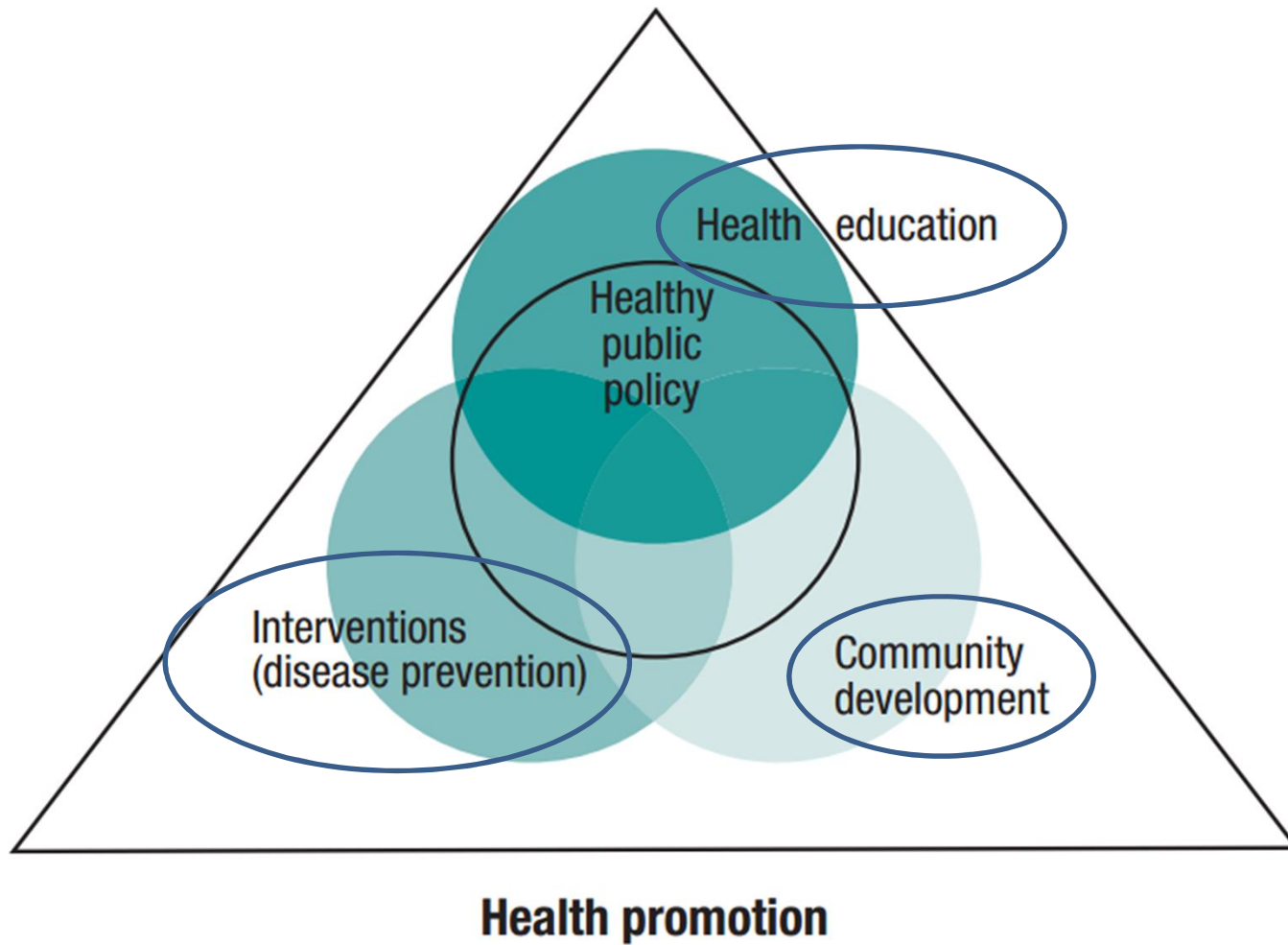
Health promotion

World Health organization



Health promotion

World Health organization



Health promotion

World Health organization

